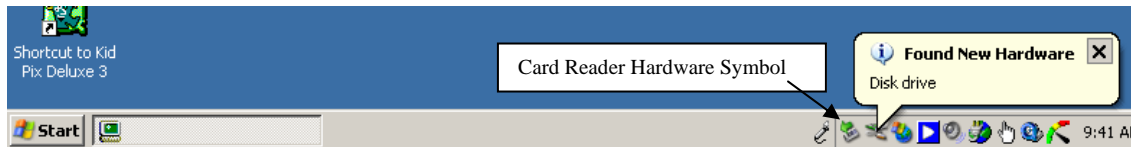


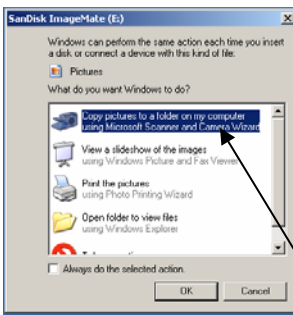
Transferring Pictures from the Digital Camera

Windows XP makes transferring your photos from a card reader easy.

1. Remove the memory card from the camera and insert it into the card reader (SanDisk – located in the box/bag with the camera). If the card doesn't slide into the reader smoothly, make sure it is oriented correctly.
2. Plug the card reader into the USB port on the bottom, front of the computer tower. If this is the first time the card reader has been plugged into the computer, you will see the "Found New Hardware" message pop up. You do not need to do anything; Windows XP will automatically "install" the new hardware.



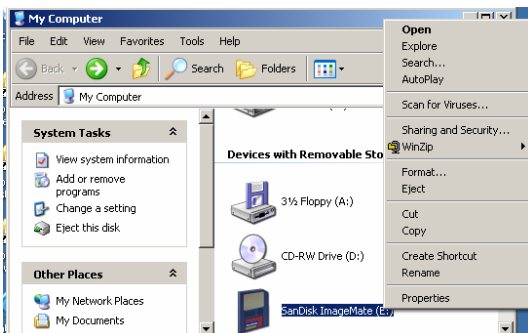
3. The following window may open up automatically.



Select **"Copy pictures to a folder on my computer using Microsoft Scanner and Camera Wizard"** and click **OK**.



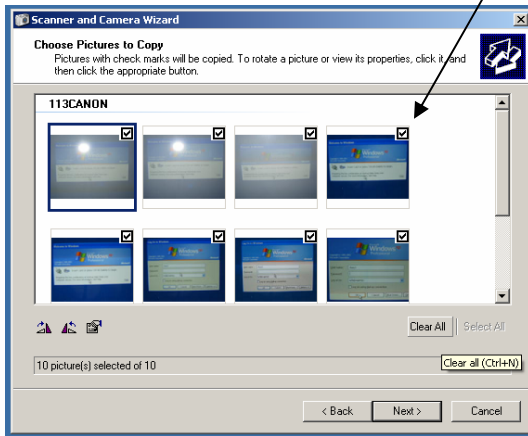
If it does not, double click on My Computer (from the Start Menu or on your desktop) and right click on SanDisk icon then left click on Autoplay



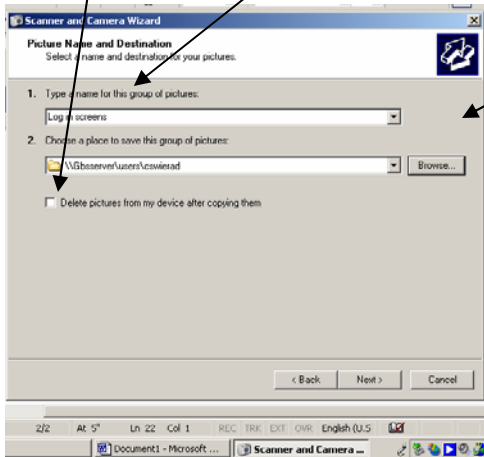
Transferring Pictures from the Digital Camera

4. Click on **Next**.

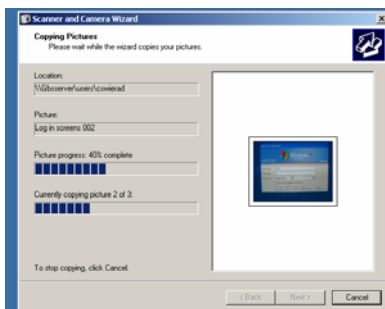
5. Select pictures to download by “checking” in the box next to the image. Click **Next**.



6. Enter a name that describes the photos to be transferred; Click **Browse** to navigate your way to your folder on the server where the pictures will be saved. Check “delete pictures from my device after copying”.



7. This screen tracks the progress of the copying.



Transferring Pictures from the Digital Camera

8. These screens signal the completion of the transfer process. Click “**Nothing; I’m finished working with these pictures**” then click **Next**. This will cause the folder with the newly transferred pictures to open and the Scanner and Camera Wizard to close.
9. To remove the card reader from the computer: Hover the mouse over the “Safely remove hardware” symbol on the taskbar then left click on the symbol.



10. Next, click on the “Safely remove USB Mass Storage Device...”



This message indicates it is now okay to unplug the card reader.

